



# FEBRUARY INFORMATION SHEET

Presented by the Rosamond Community Services District for their valued customers. If you would like more information, or have suggestions for future information sheets, please let us know by calling 661-256-3411.

## IMPORTANT INFORMATION FOR OUR CUSTOMERS

### New Meeting Time

In an effort to make board meetings more convenient and accessible to the community, RCSD has adopted a new time for the open session of their regular board meetings.

The meetings will still be held on the second and fourth Wednesdays of each month. However, the order of the open and closed sessions have been changed so that the open session of the meeting will now be held at 7 p.m.

This change will make it easier for community members who commute, to attend RCSD regular board meetings. This change also includes the reordering of the sessions so that closed session will come first. This will allow community members to hear the report out of closed session without having to stay late into the evening.

This change is just another way that RCSD is increasing the transparency of its operations, making more information easier to access by the community.

As always, the meeting schedule and agendas are available on our website at [rosamondcsd.com](http://rosamondcsd.com).

### Saving Time with Online Forms

It seems like life keeps getting busier and busier. As schedules fill up, it can be hard to do some things during 'regular business hours.'

### New Meeting Time

Board meeting sessions now have a new time and order.

**Meetings are held on the second and fourth Wednesday of each month.**

**6 p.m. to 7 p.m. - Closed session**

**7 p.m. to 8:30 p.m. - Open session**

*The end time of open session will vary depending on agenda of each meeting.*

This is part of the reason that RCSD has created a number of online forms on our website, [rosamondcsd.com](http://rosamondcsd.com).

These forms include a general contact form, public records request and leak reporting. Each of these forms is available 24 hours a day, seven days a week, allowing you to check things off your to-do list on your own schedule.

### RCSD Office Closure

The RCSD office will be closed on February 16th in honor of President's Day. If you have business to conduct, please come in on Thursday, February 12, during regular business hours.

### Water Wise Gardening

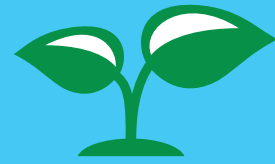
Spring will be here before you know it! To help you plan your water wise garden we have provided a tip sheet on the other side of this infosheet.

**Rosamond Community Services District**  
3179 35th Street West, Rosamond CA 93560  
Monday - Thursday, 8 am to 4:30 pm  
(661) 256-3411 - [rosamondcsd.com](http://rosamondcsd.com)

**Upcoming RCSD Meetings**  
February 11 - 7:00pm  
February 25 - 7:00pm  
at the RCSD Offices

# HOW TO GARDEN IN A *drought*

California is in a drought and that means that we need to be careful with every drop of water that we use, particularly outdoors. Here's a guide to how to help your landscape survive the drought.



## GET EFFICIENT



introduce drip irrigation



invest in a smart controller



water less frequently, but longer and close to plant roots



redirect downspouts to capture rainwater and direct it to garden areas



## PRIORITIZE YOUR LANDSCAPE

1



**VEGETABLES & FRUITS GET PRIORITY**  
They help feed your family.

2



**WATER-WISE PLANTS & SHADE TREES**  
Water-wise plants use little or no water once established. Shade trees help keep plants cool and less thirsty.

3



**THIRSTY PLANTS – LAWN, HIGH-WATER-USE & CONTAINER PLANTS**  
These plants are the lowest on the priority list. If you have to cut back, start here.



## USE MULCH

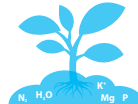
There are many benefits using mulch in your landscape.



**RETAIN MOISTURE**  
Less watering needed and grow healthier plants.



**MODERATES TEMPERATURE**  
Cool soil in the summer and warm soil in the winter.



**DECOMPOSES NUTRIENTS**  
Enrich soil and better soil quality.



**DISCOURAGE WEEDS**  
Keep weeds away and reduce maintenance.



## CAN I PLANT?

Check with your local water agency and if you can water at least two times a week, you can plant water-wise plants and shade trees. This is not the time to install new lawn or thirsty, non-California friendly plants.



## RECYCLE INDOOR WATER OUTDOORS!

Recycle water you are using indoors by capturing what otherwise might go down the drain and use it on plants.



put a bucket in your shower



use cooled cooking water



wash your fruits & veggies over a bucket



keep a pitcher next to the sink and empty water glasses in it

For more tips on reducing water use, visit [saveourH2O.org](http://saveourH2O.org)

FOLLOW US



### Upcoming RCSD Meetings

February 11 - 7:00pm  
February 25 - 7:00pm  
at the RCSD Offices

### Rosamond Community Services District

3179 35th Street West, Rosamond CA 93560  
Monday - Thursday, 8 am to 4:30 pm  
(661) 256-3411 - [rosamondcsd.com](http://rosamondcsd.com)